

Discover the Greatest Superpower to Cure Kitties with Cancer

Gregory K. Ogilvie, DVM
Diplomate ACVIM
(Specialties of Internal Medicine, Oncology)
Diplomate ECVIM-CA (Oncology)



© GK Ogilvie 2022


The Greatest Superpower to Cure Kitties with Cancer

1. *Understand* Why YOU Should Treat Kitty Cancer
2. *Embrace* the Power of the Mind Body Connection
3. *Transform* Yourself as a True Healer
4. *Begin* Kitty Cancer Care with a Diagnosis



Why Treat Cancer in Cats?

Cancer is THE MOST CURABLE of All Chronic Diseases!



I don't have nightmares...



I create them.

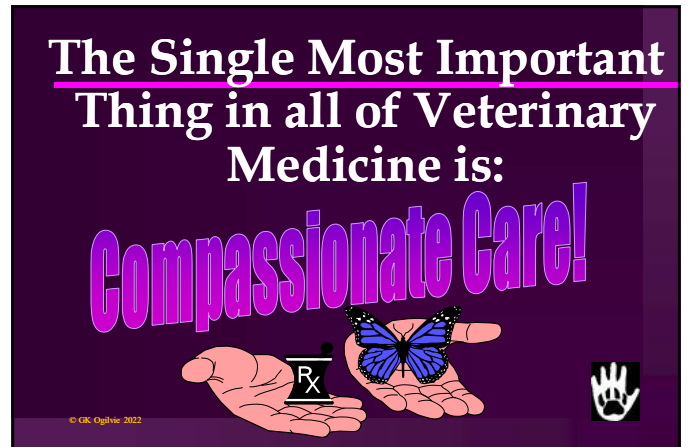
CANCER



© GK Ogilvie 2022




© GK Ogilvie 2022




Hope and the Bond:
Keys to Personal,
Professional and
Financial Success!




Hope & the Bond: The Mind Body Connection

- ❖ **Interconnectivity**
 - **Body, Immunity, Psychosocial State, Environment, Spirituality**

Psychoneuroimmunology
The Science Behind the Bond:
The Foundation of our Profession

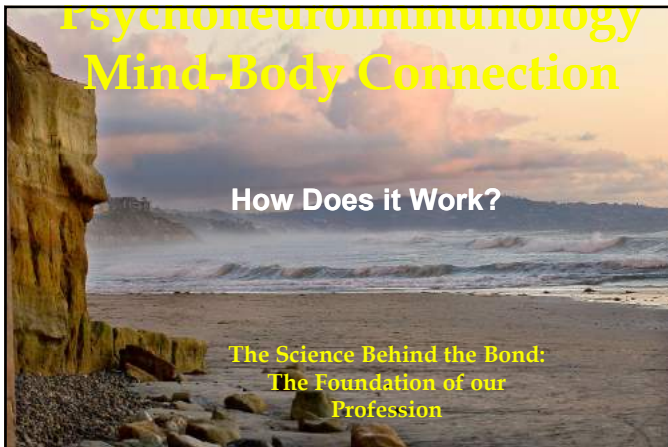


© GIK Ogilvie 2022

Psychoneuroimmunology
Mind-Body Connection

How Does it Work?

The Science Behind the Bond:
The Foundation of our Profession



Psychoneuroimmunology
Mind Body Connection

- ❖ **Immune System (Cats/Man)**
 - **Innervated/Influenced by Nervous System**
 - **Brain Modifies Mood that Influences Immunity via Cholinergic, Serotonergic, Dopaminergic Pathways**



© GIK Ogilvie 2022

Psychoneuroimmunology
Mind Body Connection

- ❖ **Mood, Mental State is Linked to Cellular Defense and Repair**
 - **Positive Mood/Mental State: Improves Health, Wellness**




© GIK Ogilvie 2022

Psychoneuroimmunology
Mind-Body Connection

Impact on Cats and Clients

The Science Behind the Bond:
The Foundation of our Profession



Psychoneuroimmunology Mind Body Connection

- ❖ Humoral and Nervous Pathways Convey Signals to/from Tumor Cells and the Brain
- ❖ Brain Modulates the Neuroendocrine-Immune System to Regulate Tumor Growth.



© GIK Ogilvie 2022

[Lancet Oncol.](#) 2010 Jun;11(6):596-601.

Psychoneuroimmunology Mind-Body Connection

Clinical Importance

The Science Behind Hope & the Bond:
The Foundation of our Profession

Mind Body Connection

- ❖ Stress Influences Mental State that Influences Immunity Resulting in Disease.
 - 3 Episodes of Depression: Double Risk of Cancer
 - Cats, People=Less Stress



[Psychoneuroendocrinology.](#) 2015 Mar; 53: 256-267.

Mind Body Connection

- ❖ 125 Women with Breast Cancer
 - Depression & Survival:
 - Depressed: 25.1 Months
 - Not Depressed: 53.6 Months
 - Cats, People: Less Depression



Mind Body Connection

- ❖ Stress and Cortisol Levels
 - Normally 4X higher in am than pm
 - Depressed/Stressed/Breast Cancer: Chronic elevations
 - Shorter Survival



© GIK Ogilvie 2022

[JAMA.](#) 2011 Feb 2;305(5):502-503.

Survey of 1000 MD's

97% BELIEVE
THERE ARE HEALTH
BENEFITS TO OWNING A CAT



97% of 1000 MD's State:

- ❖ Cats Provide Health Benefits
 - Improve Patients' Physical Condition (88%), Mental Health (97%), Mood or Outlook (98%).



*Define Yourself:
Healer or Curer*



Curing vs Healing

- ❖ Modern Medicine Claims Legitimacy to Heal Through its Scientific Approach to Medicine
 - Cure Not Care: The Primary Purpose of Medicine
 - DVM/MD "Curer of Disease" vs "Healer of the Sick."



Curing:

It is how we are educated

Healing:

It is what our clients expect

Curing:

Treating the Disease
With Medicine & Procedures

Healing:

Curing + Dissolving Fear,
Meeting Intellectual, Physical,
Spiritual, & Emotional Needs

Healing:

Curing & Caring the
Patient & Family
Through the Bond!

Hope!

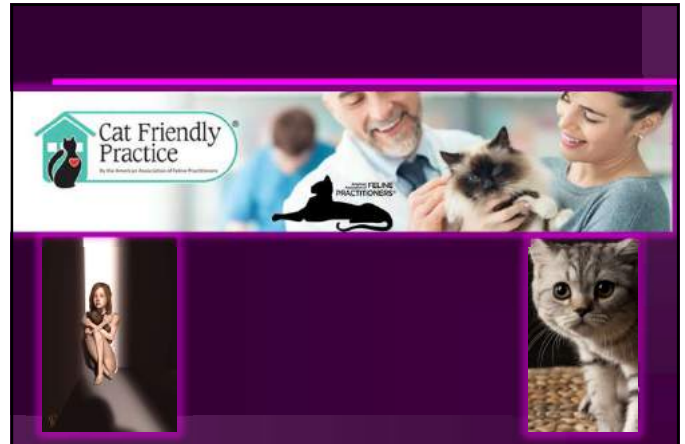


Veterinarian/Nurse vs Healer



© GK Ogilvie 2022

Ishiprograms.org



A Healer Honors the Bond by....

...Enhancing Wellness in Cats and People via the Mind Body Connection

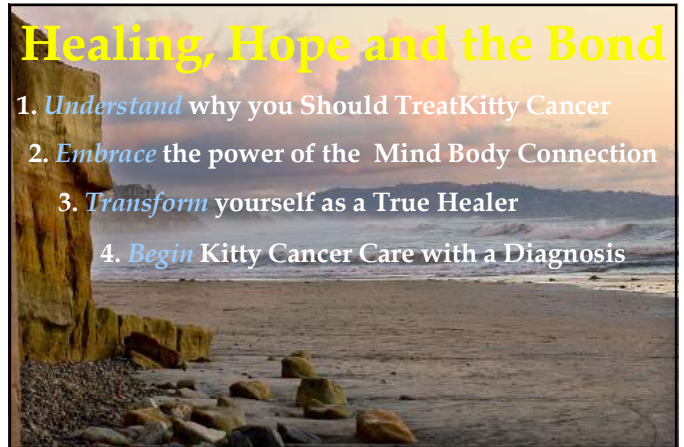
...Resolving Misconceptions, Fears, Anxieties about Cancer & Death.

...Providing Honest, Realistic Hope.



Healing, Hope and the Bond

1. *Understand* why you Should Treat Kitty Cancer
2. *Embrace* the power of the Mind Body Connection
3. *Transform* yourself as a True Healer
4. *Begin* Kitty Cancer Care with a Diagnosis



Care Beyond a Cure: Diagnostic Secrets & the Kitty Cancer Patient

Gregory K. Ogilvie, DVM

Diplomate ACVIM (Specialties of Internal Medicine, Oncology)
Diplomate ECVIM-CA (Oncology)



When to do Diagnostic Test:

- When it will change your Client's Willingness to Treat
- When it will Change your Treatment Plan



When to do Diagnostic Test:

- What is it?
- How Extensive is it?
- Has it Spread?



10 yr old CM DSH

- ❖ History of Progressive Stifle Swelling, Lameness: 3 months.
- CBC, Biochem, UA, FeLV, Chest Rads: WNL



Differentials? Diagnostics?



Differentials?



Bad Disease?
Good Disease?



Best Diagnostics

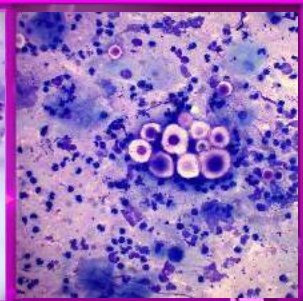
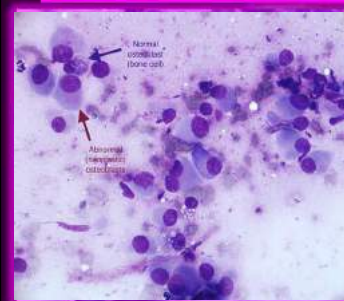
Aspirate
vs
Biopsy?

Best Site?



Good Disease? Bad Disease?

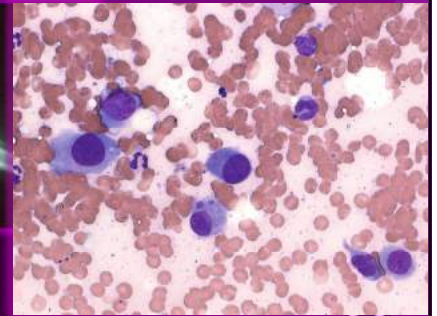
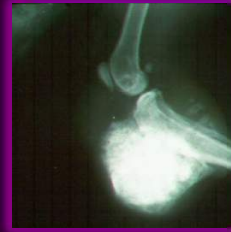
Best Diagnostics: Biopsy, Cytology?



10 yr old CM DSH



Osteosarcoma



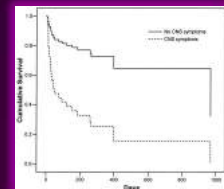
Good Disease? Bad Disease?

Update of the 2009 and 2013 ABCD guidelines on prevention and management of feline infectious diseases



Journal of Feline Medicine and Surgery (2015) 17, 570–582

10 yr old CM DSH



- OSA Median ST 49.5 Mont
- Cryptococcosis ST 32 Mont

Bone Lesions

- Aspirate ≥ Biopsy
- Center!
- OSA: Good Prognosis
- Cryptococcosis: Good Prognosis



1 year old DSH Tabby

- ❖ Enlarged Cranial Superficial Cervical Nodes.

➤ CBC, Biochem, UA, Chest Rads, Ultrasound WNL

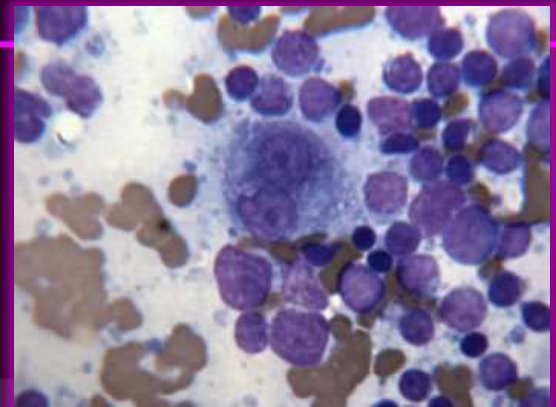
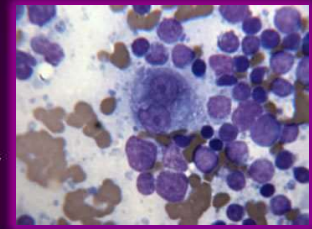
➤ FeLV+

Differentials? Diagnostics?



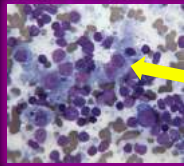
Diagnosis: Lymphoid Malignancy

- ❖ PARR
- ❖ Flow Cytometry
- ❖ Histopathology
- ❖ Cytology

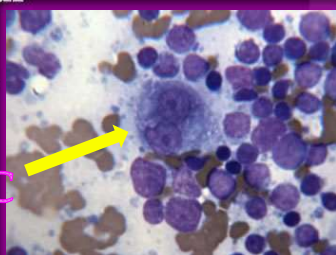


5 year old DSH Tabby

- ❖ Enlarged Cranial Superficial Cervical Nodes.



RSC



Good News? Bad News?

Feline Hodgkin's-like Lymphoma

- ❖ Cervical, regional lymphadenopathy
- ❖ Refractory to Radiation, Chemo
- ❖ Reed Sternberg cells!



Good News? Bad News?

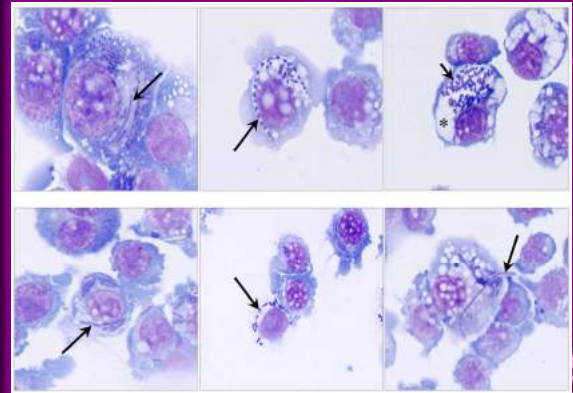


Net Pathol. 2001 Sep;38(5):504-11.

5 year old DSH Tabby



Good News? Bad News? 



Cryptococcosis, Yersinia

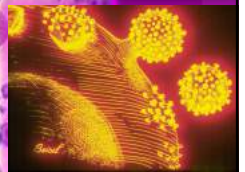
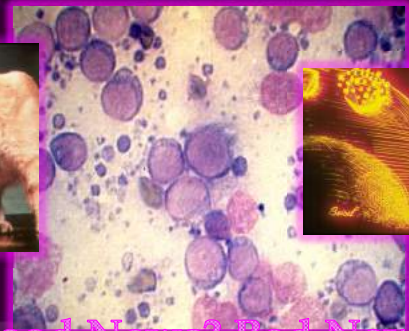
❖ Cervical, regional lymphadenopathy



Good News? Bad News? 

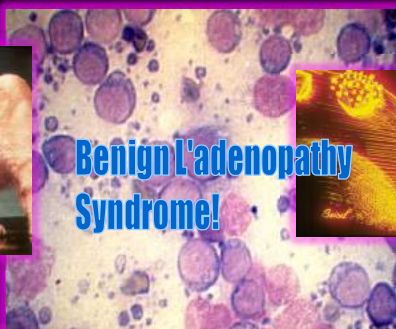
Yersinia Pathol 2001 Sep;38(5):504-11.

Generalized Lymphadenopathy



Good News? Bad News? 

Generalized Lymphadenopathy



Lymphadenopathy

-Hodgkins Like Lymphoma: Bx
-Lymphoma: Bx, Cyto, Flow PARR
-Infectious Disease: Cyto, Blood Test





11 yr old CM DSH

- ❖ History of hematuria, stranguria unresponsive to antibiotics: 4 months duration
 - CBC, Biochem, UA, FeLV, Chest Rads: WNL.
 - UA: Pyuria, culture negative
- Differentials? Diagnostics?



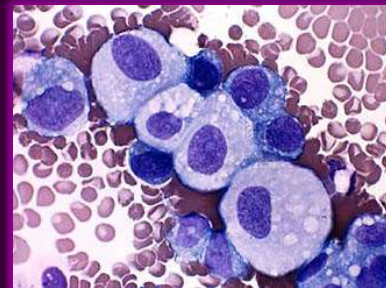
Best Diagnostics: Bladder Tumors?



Differentials? Diagnostics?
Good Disease? Bad Disease?



Cytology and TCC



Kitty Bladder Cystoscopy?

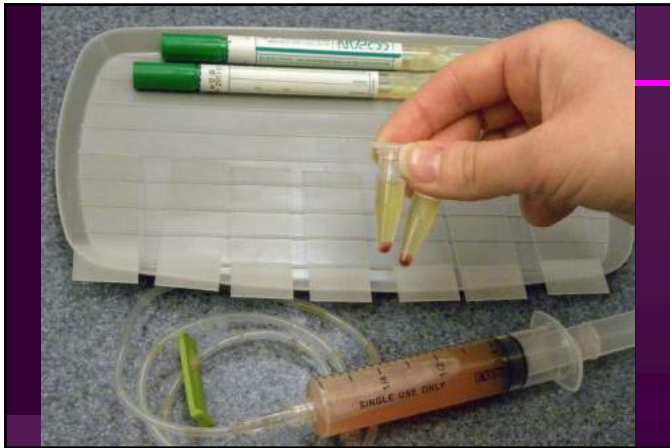


Traumatic Catheterization



- ❖ Ultrasound Guided
- ❖ Red Rubber Catheter in Urethra to Tumor
- ❖ Suction with "In and Out" Movement
 - Cytology
 - Histopathology





Transitional Cell Carcinoma

- ❖ Presumed Non Responsive UTI
- ❖ Often Away from Trigone
 - Median Survival Time:
 - Piroxicam: 265-311 days



J Feline Med Surg 2012 Aug;14(8):527-33



I don't have nightmares...



I create them.

CANCER



© GK Opilvie 2022




**Cancer:
The Bond in
Crisis**



**The Single Most Important
Thing in all of Veterinary
Medicine is:**

Compassionate Care!



© GK Ogilvie 2022



Balance Quality vs. Quantity

**Cancer
Toxicity
Fear**



**Compassionate
Care**

© GK Ogilvie 2022



**Break Down
Myths and Misperceptions**

Build the Team

Provide Compassionate Care



© GK Ogilvie 2022





**FEAR-FREE
PRACTICE**



"Taking the pet out of petrified."




© GK Ogilvie 2022

Staff

Cancer






Question!

❖ What chronic disease is the MOST CURABLE of all chronic diseases in dogs, cats and people?


- 1. Cancer
- 2. Renal Failure
- 3. Liver Failure
- 4. Heart Failure



Question!

❖ What chronic disease is the MOST PREVENTABLE of all chronic diseases in dogs, cats and people?

- 1. Cancer
- 2. Renal Failure
- 3. Liver Failure
- 4. Heart Failure




Celebrate!



Claim!



Love, Care, Heal



Break Down Myths and Misperceptions

Build the Team

Provide Compassionate Care

Unspoken Fears

Pain!
Nausea!
Diarrhea!
Appetite!

Going
Bald!!!!



Know the
Commandments

Prevention



The First Commandment

❖ *Don't Let them Hurt!*



Prevention



© GK Ogilvie 2022

The Second Commandment

❖ *Don't Let them Vomit (or have diarrhea)!*



Prevention



The Third Commandment

❖ *Don't Let them Starve!*



Prevention



Honoring the Bond When Cancer Threatens

Delivering the "news"

Grief process BEGINS
at diagnosis!



Understand the power of our words!



The Three Golden Rules

Biopsy!

Biopsy!

Biopsy!





Honoring the Bond When Cancer Threatens

- ❖ Explanations
 - Simple and Short
 - Lay terms
 - Visual aides
 - Written notes



Honoring the Bond When Cancer Threatens

Balance

- Emotions
- Time
- Finances
- Toxicity



Establish Goals

- ❖ Goal: Quality of Life
 - Comfort
 - Comfort and Control
 - Comfort and Long Term Control
 - Euthanasia



Honoring the Bond When Cancer Threatens

"WE" are Always Faced with
Balance Between:

- Sustaining Realistic, Honest Hope
- Honest Assessment of Disease, Options, Cost



Compassion Fatigue

- Normal response of people who care deeply



www.compassionfatigue.org



Compassion Fatigue

- ❖ Veterinarians and Nurses's:
 - Experience Death 5X More Than Physicians.
 - Financial Issues Govern Decisions
 - Euthanasia



www.compassionfatigue.org

Compassion Fatigue: What are the Signs?

- ❖ Excessive blaming
- ❖ Bottled up emotions
- ❖ Isolation from others
- ❖ Complains about administration
- ❖ Substance abuse
- ❖ Overspending, gambling, sexual addictions
- ❖ Poor hygiene, appearance



www.compassionfatigue.org



Compassion Fatigue

- ❖ What Can We do to Prevent CF?
 - #1 EDUCATION
 - Acknowledge the Condition
 - Take Care of Yourself
 - Does not Require Psychotherapy

J Am Anim Hosp Assoc. 2002;38(4):307-10.
Understanding compassion fatigue: keys for the caring veterinary healthcare team.
Mitchener KL, Ogilvie GK.



Compassion Fatigue

*"Nothing is more intrinsic to medicine than compassion, the basis of alleviating suffering...
From compassion burns the fire of hope..."*

www.compassionfatigue.org



Honoring the Bond

1. Yield to Heros and Angels
2. Understand the Mind Body Connection
3. Transform Patients/Clients as a True Healer
4. Redefine Cancer Care via the Bond
5. Pursue Compassionate Care
6. Follow the Commandments & Golden Rules
7. Heal from Compassion Fatigue



